

Ice Linden Adult Cup

April 10th – 13th, 2025

Adult International Competition

Free Skating, Artistic Free Skating, Pair Free Skating, Pair Artistic Free Skating, Couples Pattern Dance, Couples Free Dance, Solo Pattern Dance, Solo Free Dance, Elements

Zimní stadion (Ice rink)

Tyršova 621/21a
353 01, Mariánské Lázně
Czech Republic

Resume

1.	GENERAL INFORMATION	3
1.1.	CATEGORIES	3
1.2.	AGE CATEGORIES.....	3
1.3.	REGISTRATION	4
1.4.	OTHER INFORMATION	5
1.4.1.	Planned Program Content From	5
1.4.2.	Music & Music Form	5
1.4.3.	Results	6
2.	COMPETITION REQUIREMENTS.....	7
2.1.	TECHNICAL REQUIREMENTS.....	8
2.1.1.	ISU Categories.....	8
2.1.2.	BIS Categories	8
2.1.3.	Local Categories.....	9
3.	TRAINING OFFER	10
4.	CONSULTATION WITH THE TECHNICAL SPECIALIST/JUDGE.....	10
5.	BANQUET	10
6.	ICE RINK MARIÁNSKÉ LÁZNĚ	11
7.	PRELIMINARY SCHEDULE	12
8.	ACCOMODATION IN MARIÁNSKÉ LÁZNĚ.....	12
9.	THE CITY OF MARIÁNSKÉ LÁZNĚ.....	12
10.	PRICE OVERVIEW	16

1. GENERAL INFORMATION

Date: April 10th – 14th, 2025

Place: Zimní stadion (Ice rink)
Tyršova 621/21a
353 01, Mariánské Lázně
Czech Republic

Contact: icelindenadultcup.cz@gmail.com

Website: <https://lindenadultcup.cz>

FACEBOOK: https://www.facebook.com/groups/1428117597968921?locale=cs_CZ

1.1. CATEGORIES

ISU Categories

- | | |
|-------------------------------------|--|
| • Free Skating (Women/Men) | Masters Elite, Masters, Gold, Silver, Bronze |
| • Pair Free Skating | Masters Elite, Masters, Intermediate, Adult |
| • Artistic Free Skating (Women/Men) | Masters Elite, Masters, Gold, Silver, Bronze |
| • Pair Artistic Free Skating | Masters Elite, Masters, Intermediate, Adult |
| • Couples Pattern Dance | Gold, Silver, Bronze |
| • Couples Free Dance | Gold, Silver, Bronze |

BIS Categories

- | | |
|----------------------------------|----------------------|
| • Solo Free Dance (Women/Men) | Gold, Silver, Bronze |
| • Solo Pattern Dance (Women/Men) | Gold, Silver, Bronze |

Local Categories

- | | |
|------------|-------------------------|
| • Elements | Elements II, Elements I |
|------------|-------------------------|

1.2. AGE CATEGORIES

Participation in the single and pair/couples disciplines at the International Adult Figure Skating Competitions is open only to competitors who have reached at least the age of eighteen (18) before 1 st July 2024.

Adult Junior	born between	July 1st, 2009, and June 30th, 2009
Young Adults	born between	July 1st, 1996, and June 30th, 2006
Class I	born between	July 1st, 1986, and June 30th, 1996
Class II	born between	July 1st, 1976, and June 30th, 1986
Class III	born between	July 1st, 1966, and June 30th, 1976
Class IV	born between	July 1st, 1956, and June 30th, 1966
Class V	born before	July 1st, 1956

All age groups can be further divided or put together, depending on the number of registrations. Proof of age must be presented for all competitions. This can be a copy of a birth certificate, passport or identity card. The organizers reserve the right to cancel the category in case of little interest and other cases.

1.3. REGISTRATION

Registration must be received by **March 17, 2025**

Entries can be made from January 1, 2025 at:

<https://forms.gle/DHeaRgXDfEpiYNJD7>

REGISTRATION FEES

- 60€ / 1450Kč for the first single competition in ISU/US categories
- 40€ / 950Kč for each additional single competition in ISU/US categories
- 40€ / 950Kč for each partner in a pair/couples for the first competition in ISU/US categories
- 30€ / 700Kč for each partner in a pair/couples for each additional pair competition in ISU/US categories
- 40€ / 950Kč for the first single competition in local categories

The fees must be paid at the time of registration. Please transfer the money to the following bank account. You can send all fees in one payment. In the message to the recipient, list the amounts that make up the payment.

BANK ACCOUNT

Komereční banka

Account number: 35-7323240297

Banking code: 0100

IBAN: CZ1301000000357323240297

Name: Sportovní krasobruslařský klub Mariánské Lázně, z.s.

Address: Nejdlova 925/2, Stará Role, 360 17 Karlovy Vary

Purpose of payment: **LC 25 – surname, name – category or list the amounts that make up the payment.**

DOCUMENTS REQUIRED TO PARTICIPATE IN THE COMPETITION

Documents must be received by **March 28, 2025**

Submitting through an online form:

- Copy of identity card/passport/birth certificate*
* or Surname, Name, Date of birth, Residential address, Number of ID/passport/birth certificate (will be checked personally during the registration)

<https://forms.gle/pLE3jPqnsnuSMRxR7>

- Planned Program Content Form (*if applied)
<https://forms.gle/dk3M6mVvJ1eawFvw5>
- Music (**MP3 format only**) & Music Form
<https://forms.gle/3yyXZ2BxBvzTPfJJ8>

CONDITIONS OF PARTICIPATION

Participation in the international competition Ice Linden Adult Cup is open to all competitors who:

- are individual members of an ISU Member, or a member of a club that is itself a member of an ISU Member.
- are member of only one ISU Member. In the case of Pair/Couples Skating both Competitors in a team must enter as members of the same ISU Member.
- fit into the age groups in this announcement.
- since July 1, 2024, have not participated in an ISU Championship, International Competition or National Championship of a Member Federation (other than an Adult International Competition or Adult National Championships) or a competition from which a competitor qualifies for the National Championship of a Member Federation (other than an Adult National Championship).
- the Entry will be confirmed by the competition organizer.

IMPORTANT NOTES

In the event the competition is oversubscribed, the Local Organizing Committee reserves the right to stop accepting further entries even before the closing date for entries. Entry forms will be accepted on a first come, first served basis.

1.4. OTHER INFORMATION

1.4.1. Planned Program Content Form

The competitors in Free Skating, Pair Free Skating, Couple Free Dance and Solo Free Dance Categories must forward the "Planned Program Content Form" to the Local Organizing Committee following submission of the online entry form. **It is not permitted to hand over the Planned Program Content Form directly to the competition Officials during the competition.** Changed Program Content Form should be turned in at the registration desk. You can find the Planned Program Content Form document at <https://lindenadultcup.cz/dalsi-rocniky/ice-linden-cup-2025/>

Submission PPC Form through online form here:

<https://forms.gle/dk3M6mVvJ1eawFvw5>

1.4.2. Music & Music Form

Each competitor must provide competition music file of excellent quality with the filled out Music Form.

The music file must be in **MP3 format**, and state the competitor's **category, sex, age category – name, surname** (e.g. Free skating silver ladies I - Lucie Čiháková). The competitors should have a backup copy of the music for each program in the form of a flash disc on the competition.

The titles, composers and performers of the music to be used for the individual programs for Singles and Pairs/Couples must be listed for each competitor on the official competition Music Form and forwarded to the Local Organising Committee following submission of the online entry form. You can find the Music Form document at <https://lindenadulcup.cz/dalsi-rocniky/ice-linden-cup-2024/>

If music information is not complete and discs not provided, accreditation will not be given.

Submission Music & Music Form through online form here:

<https://forms.gle/3yyXZ2BxBvzTPfJJ8>

IMPORTANT NOTE:

**If music information is not complete and music file not provided
(incorrect name of file/music format/...),
accreditation will not be given!**

1.4.3. Results

Results will be posted on:

<https://www.czechskating.org/vysledky-soutezi>

LIABILITY

Every competitor participates at his own risk. Please take out accident instance.

AWARDS

The first three places in each category will receive trophies.

Every competitor will receive diploma.

PHOTO & VIDEO

By entering the competition, you consent to the taking of photographs and video recordings, including their publication. The video recording will be available during the competition as a live stream. If you do not agree to the publication of additional photographs, please indicate this during registration.

EXPENSES PROVIDED

The organizer will provide travel, accommodation and meals for all Event Referees, the Technical Panel Members, Data and Replay Operators and Judges.

All competitors and coaches will cover their own expenses.

2. COMPETITION REQUIREMENTS

The ISU Categories will be conducted in accordance with the ISU Constitution and General Regulations, the ISU Special Regulations & Technical Rules Single & Pairs/Couples Skating, all pertinent ISU Communications, and this Announcement.

The US Skating Categories will be conducted in accordance with the US Skating Constitution and General Regulations, all pertinent US Skating Communications, and this Announcement.

The Local Categories will be conducted in accordance with the Local Regulations written in this Announcement.

BASIC INFORMATION FOR ALL COMPETITORS

- It is expected that competitors will enter at a level appropriate to their current skating ability.
- Entries may be reviewed prior to announcement of the schedule to ensure the integrity of the competition.
- Competitors are not obliged to enter the same level as in previous years.
- The Masters Elite category is intended for those competitors who competed previously at the junior or senior level in national or international competition, but is not mandatory for such competitor.
- Competitors may compete at only one level within each segment.
- Any program violating the time limit set out in this Announcement will receive a deduction of 1.0 for every 5 seconds or part thereof lacking or in excess of the permitted time.
- Competitors have 30 seconds from the time their name is called to take their starting position.
- Clothing for ISU and US Skating Categories is assessed according to the ISU Rule 501(1). Competitors should note the following regarding appropriate clothing. Clothing and any make-up of the competitors must be modest, dignified and appropriate for athletic competition – not garish or theatrical in design. Clothing may, however, reflect the character of the music chosen. The clothing must not give the effect of excessive nudity inappropriate for the discipline. Men must wear full-length trousers. In addition, in Solo Dance, Women must wear a skirt. Accessories and props are not permitted. Clothing that does not adhere to these guidelines will be penalized by a deduction. The deduction for inappropriate clothing, make-up, props and accessories (1.0) will be determined by a majority of the judges and the referee.

ADDITIONAL INFORMATION FOR SINGLE DISCIPLINES

- An entry in an Singles Artistic Free Skating category may be at the same level or one level higher (not lower) than the entry in an event of any other category.
- When 25 or more competitors register for the same category, the competition will be divided into two groups according to the age of the competitors. In the category with an odd number of competitors, the competitor of median age will compete with the younger group of competitors.
- When fewer than 3 competitors register to singles disciplines, age categories may be combined wherever possible to ensure competition.

ADDITIONAL INFORMATION FOR PAIR/COUPLES DISCIPLINES

- Each pair/couples team must consist of one man and one lady.
- An entry in Pair Artistic Free Skating category may be at one level higher (not lower) than an entry in Couples Ice dance categories.
- Coaches and their students are welcome to compete in all events, however, this competition DOES NOT have a PRO-AM category.
- If a pair/couples team is formed of competitors having different skill levels, it is expected that they will enter at the level of the more skilled skater. Further guidance in this respect can be obtained by contacting the ISU Adult Figure Skating Group.

2.1. TECHNICAL REQUIREMENTS

2.1.1. ISU Categories

Free Skating / Free Artistic Skating / Pair Free Skating / Pair Artistic Free Skating / Couples Pattern Dance / Couples Free Dance

TECHNICAL REUQUIREMENTS

Technical Requirements of these competition categories correspond with requirements of the ISU rules at this link:

[https://isu-d8g8b4b7ece7aphs.a03.azurefd.net/isudamcontainer/uploads/images/eventtype/eventtype_documents/IAFSC Technical Announcement 2024-25 \(August 6th\).pdf](https://isu-d8g8b4b7ece7aphs.a03.azurefd.net/isudamcontainer/uploads/images/eventtype/eventtype_documents/IAFSC_Technical_Announcement_2024-25_(August_6th).pdf)

2.1.2. BIS Categories

Solo Pattern Dance / Solo Free Dance

TECHNICAL REUQUIREMENTS

Technical Requirements of these competition categories correspond with requirements of the US Skating rules at this link:

<https://lindenadultcup.cz/wp-content/uploads/2024/12/British-Adult-Nationals.pdf>

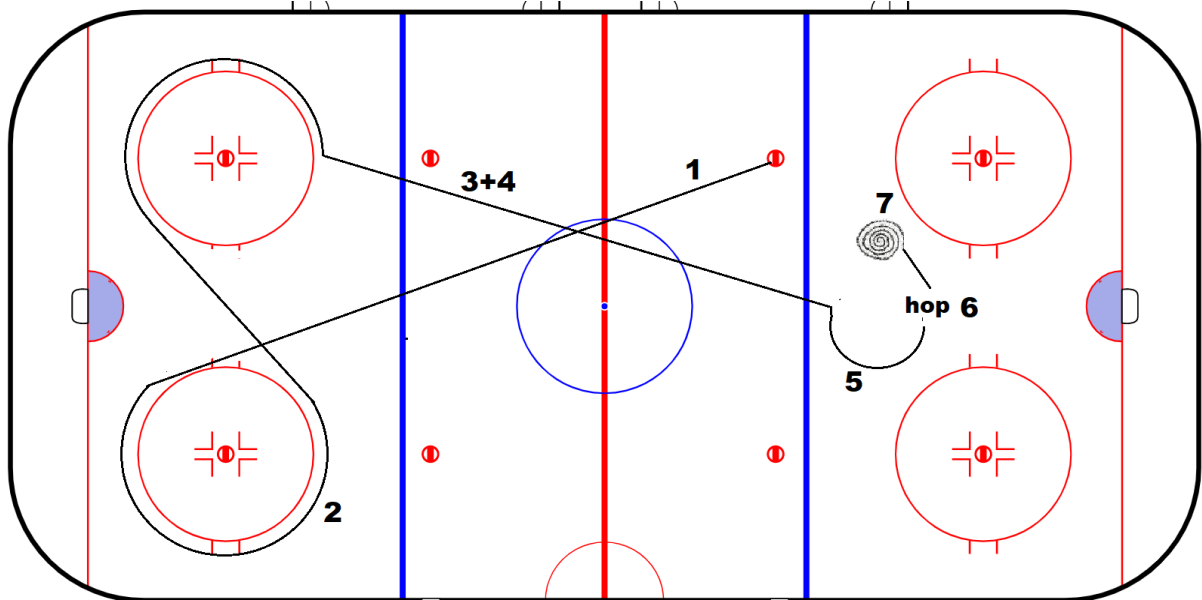
2.1.3. Local Categories

Elements

TECHNICAL REUQUIREMENTS

- Complete beginners without advanced skating skill compete in this category
- A competitor in this category must not participate in other categories
- The "Category Elements" competition will be complemented by a musical accompaniment selected by the organizer
- OBO system
- The order of the individual elements is fixed
- It is not necessary to follow the exact placement of the elements. The competitor skates so that the elements follow each other smoothly
- The warm-up duration is four (4) minutes
- The max. number of skaters in the warm-up is 10.
- The minimum number of competitors to open a category is 5.

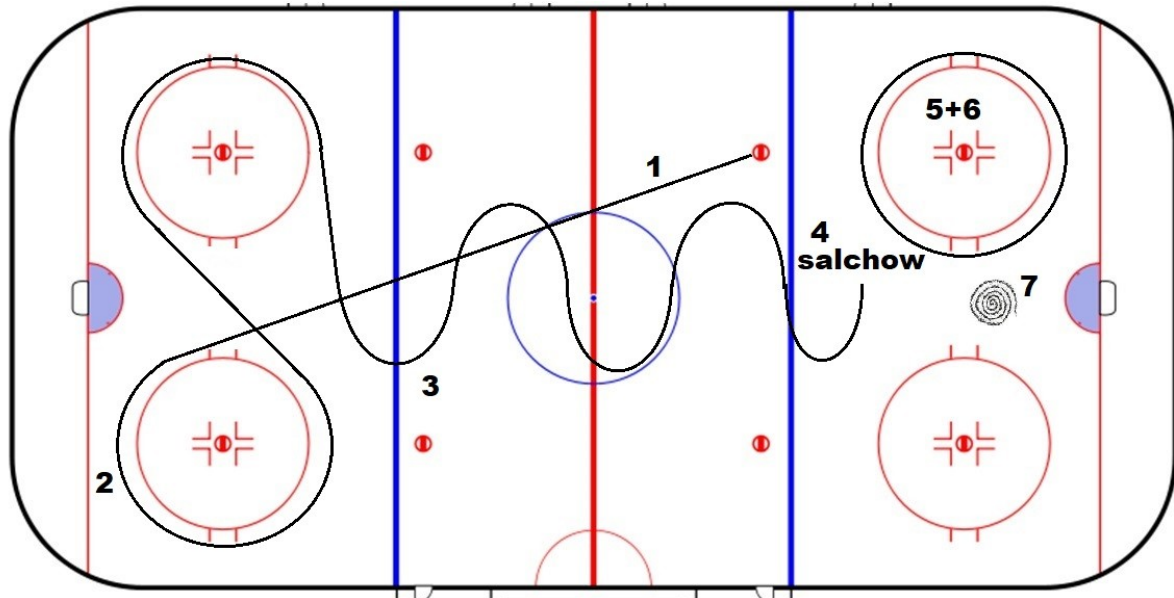
PROGRAM – ELEMENTS I



1. Crossover
2. Forward crossover
3. Forward lunge (drag)
4. Teapot (shoot the duck)
5. Three-turn
6. Waltz jump
7. Spin (can be used both foot)

A video: <https://lindenadultcup.cz/wp-content/uploads/2024/12/Elements-I-1.mp4>

PROGRAM – ELEMENTS II



1. Teapot (shoot the duck)
2. Backward crossover
3. Forward outside 3-turn + step on inner edge of second legs + 1 backward crossover on the other hand (= mávátka) – 2x
4. Salchow
5. Forward crossover (at least 4 crossover)
6. Spiral
7. One foot spin

A video: <https://lindenadultcup.cz/wp-content/uploads/2024/12/Elements-II.mp4>

3. TRAINING OFFER

45 min – 10€ / 250Kč (without a coach)

45 min – 30€ / 750Kč (with a coach Mrs. Monika Škorničková)

You can book training here:

<https://docs.google.com/spreadsheets/d/1tJgNskCyybrTadFNNJXLskNcqBtYK51HHqQ4N5vTVBc/edit?usp=sharing>

4. CONSULTATION WITH THE TECHNICAL SPECIALIST/JUDGE

You can consult your performance with the technical specialist/ judge. **Consultations will take place during the banquet.** You must register for the consultation during the registration on competition.

Registration is also possible by e-mail: icelindenadultcup.cz@gmail.com

5. BANQUET

11.04.2025 (Friday) at 19:00

HOTEL BUTTERFLY

Hlavní 655
353 01, Mariánské Lázně
Česká republika

PRICE

20€ / 450Kč (one accompanying person included)

RESERVATION

The reservation is part of the registration for the competition via the registration form.

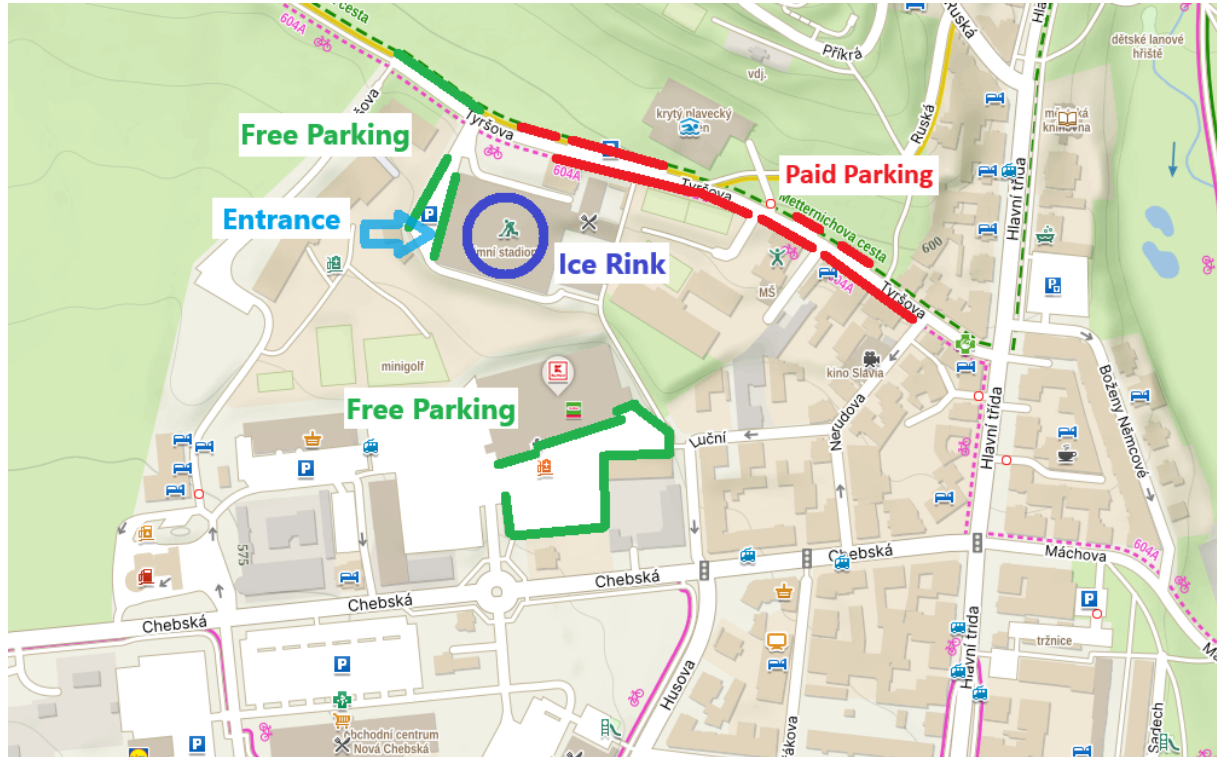
6. ICE RINK MARIÁNSKÉ LÁZNĚ

Tyršova 621/21a
353 01, Mariánské Lázně
Czech Republic

Website: <https://www.sport-marianskelazne.cz/sportovni-arealy/zimni-stadion/>

Ice surface: 52x25 meters

PARKING PLACES



7. PRELIMINARY SCHEDULE

10.04.2025 – Thursday	
07:00	Training (application on site)
11.04.2025 - Friday	
07:00	Training for competitors
	Competition
	- Free Skating
	- Pair Free Skating
	Announcement of results
	Training (application on site)
19:00	Banquet
12.04.2025 - Saturday	
07:00	Training for competitors
	Competition
	- Artistic Free Skating
	- Artistic Pair Free Skating
	- Solo Free Dance (can be moved to Friday)
	- Solo Pattern Dance (can be moved to Friday)
	- Couples Pattern Dance (can be moved to Friday)
	- Couples Free Skating (Dance) (can be moved to Friday)
	- Elements
	Announcement of results
	Training (application on site)
13.04.2025 - Sunday	
8:00 – 12:00	Training (application on site)

8. ACCOMODATION IN MARIÁNSKÉ LÁZNĚ

Accommodation in Mariánské Lázně is available in hotels, pensions, hostels, kempes and apartments. For booking the suitable accommodation, you can use the reservation system on website of the city.

RESERVATION SYSTEM

<https://www.marianskelazne.cz/en/accommodation>

9. THE CITY OF MARIÁNSKÉ LÁZNĚ

Founded in the early 19th century, neo-Classical Mariánské Lázně is one of Europe's finest spa towns. From an inhospitable marshy valley rose a beautiful town of verdant parks, spa houses, gloriottes, pavilions and colonnades in every architectural style of the last two centuries.



The heart of the spa is the spa park around which you'll find the colonnade and many neo-Classical and Art Nouveau buildings. The park extends up into the surrounding hills and along the valley. The local spa architecture is dominated by houses and villas dating back to the 19th and early 20th centuries.

The perfectly preserved spa houses and hotels, colonnades and pavilions housing the mineral springs give the town a unique appearance. Churches belonging to various denominations hint at its erstwhile international significance and importance as a cosmopolitan European spa town.

*Information source is available on the website of the city Mariánské Lázně:

<https://www.marianskelazne.cz/en/unesco/marianske-lazne>

UNESCO World Heritage

Mariánské Lázně is one of eleven exceptional spa towns from seven countries to be added to UNESCO's world cultural heritage list as part of a multi-country nomination called "The Great Spa Towns of Europe".

"The Great Spa Towns of Europe" is a grouping of 11 spa towns from different seven countries which were added to UNESCO's world cultural heritage list as part of a joint international bid. Cooperation between the spas and a joint effort involving all the towns eventually led to UNESCO recognising the extraordinary value of Europe's spa traditions. Following a process that took many years, Mariánské Lázně along with ten other European spa towns, finally received word that the decision had been taken to declare the town a UNESCO world cultural heritage site.

*Information source is available on the website of the city Mariánské Lázně:

<https://www.marianskelazne.cz/en/unesco>

Mineral Springs



The different chemical composition of the town's numerous springs makes it the perfect place to treat a wide variety of ailments. The local springs containing a variety of minerals are the basic resource used in numerous spa treatments available. In the countryside around the town some 100 springs rise from the ground and within the town itself there are 40 springs.

The various mineral springs are now sheltered by pavilions and colonnades that have been built over them over the years, all of which helps create the town's special spa ambience.

SPRING WATER FROM MARIÁNSKÉ LÁZNĚ IS USED TO CURED

- Disorders of the Kidneys and of the Urinary Tract
- Respiratory Disorders
- Locomotive System Disorders
- Metabolic Disorders
- Gynaecological Disorders, including the Treatment of Sterility
- Oncological Disorders

Map of springs:

https://www.marianskelazne.cz/userfiles/prameny_1469689080.pdf

*Information source is available on the website of the city Mariánské Lázně:

<https://www.marianskelazne.cz/en/about-city/springs>

Singing Fountain



There is a daily program of music played as the fountain springs into life - these performances take place every odd hour from 7 am until 10 pm with the final two displays (9 am & 10 pm), making use of embedded lights. Each year on 30th April at 9 pm, the fountain puts on its first performance of the new tourist season. The official close of the season comes on 31st October at 8 pm when the fountain puts on its final show.

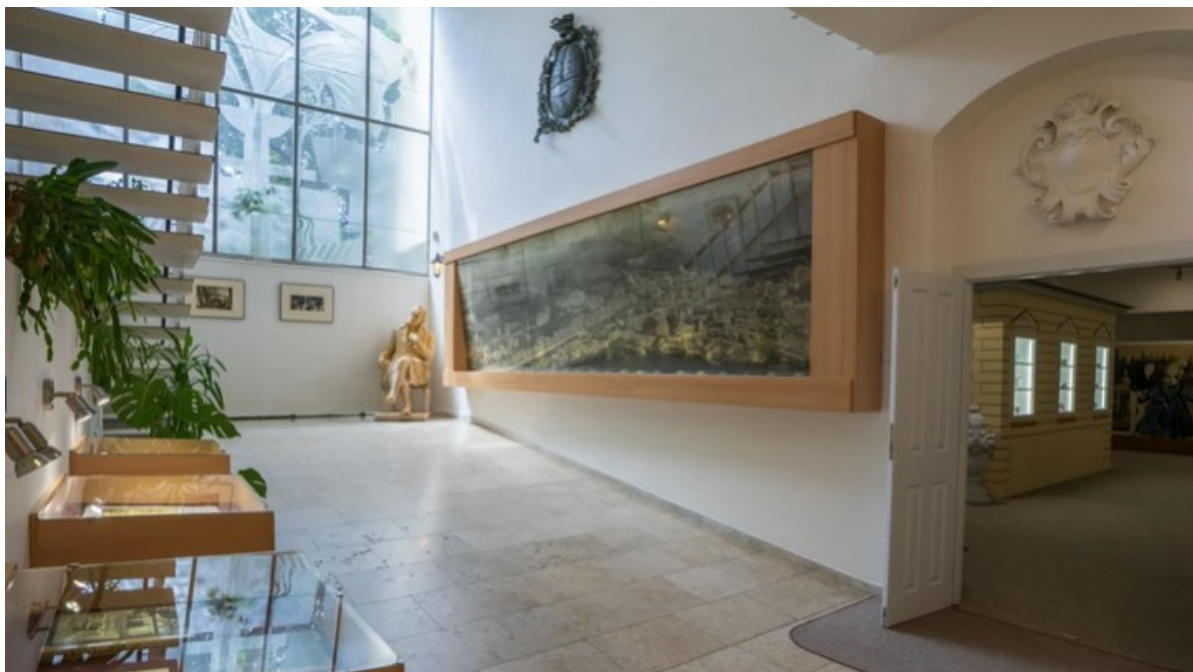
The fountain is a circular pool, 18m in diameter with a 12-piece stone sculpture of stylized flower forms and a polished steel centre piece in the middle. The fountain is made up of a water jet system that in total contains 330 nozzles, the centre jet capable of reaching a height of six metres. The whole thing is computerised enabling it to produce a very creative and varied combination of effects which can include coloured lights embedded in the pool. The fountain's ability to put on such dramatic shows was the work of academic architect Pavel Mikšík.

*Information source is available on the website of the city Mariánské Lázně:

<https://www.marianskelazne.cz/en/tourist-attractions/colonnades-and-fountains/singing-fountain/>

Town Museum

The museum is located in the oldest house in the historical part of the town, characterized by a sunlit, south-facing Empire frontage. This is an important building dating back to the 19th century and gives some indication of how the town looked when it was first founded.



The house was built in 1818 as a guesthouse for spa visitors called Zlatý hrozen (The Golden Grapes). In 1823 Johann Wolfgang Goethe was a guest here - a bronze memorial plaque above the arched entrance and an exhibition on the first floor commemorate Goethe's time in Mariánské Lázně.

Founded in 1887, the museum has been housed in the building since 1953 and oversees collections from the Mariánské Lázně region. Between 1975 and 1979 the building underwent renovation - a new storey was added featuring a projection room, an auditorium and rooms for new exhibitions, all of which were built in the courtyard. The historical building underwent further renovation in 1999.

*Information source is available on the website of the city Mariánské Lázně:

<https://www.marianskelazne.cz/en/tourist-attractions/town-museum>

10. PRICE OVERVIEW

REGISTRATION FEES

- 60€ / 1450Kč for the first single competition in ISU/US categories
- 40€ / 950Kč for each additional single competition in ISU/US categories
- 40€ / 950Kč for each partner in a pair/couples for the first competition in ISU/US categories
- 30€ / 700Kč for each partner in a pair/couples for each additional pair competition in ISU/US categories
- 40€ / 950Kč for the first single competition in local categories

TRAINING OFFER

- 45 min – 10€ / 250Kč (without a coach)
- 45 min – 30€ / 750Kč (with a coach)

BANQUET

- 20€ / 450Kč (one accompanying person included)